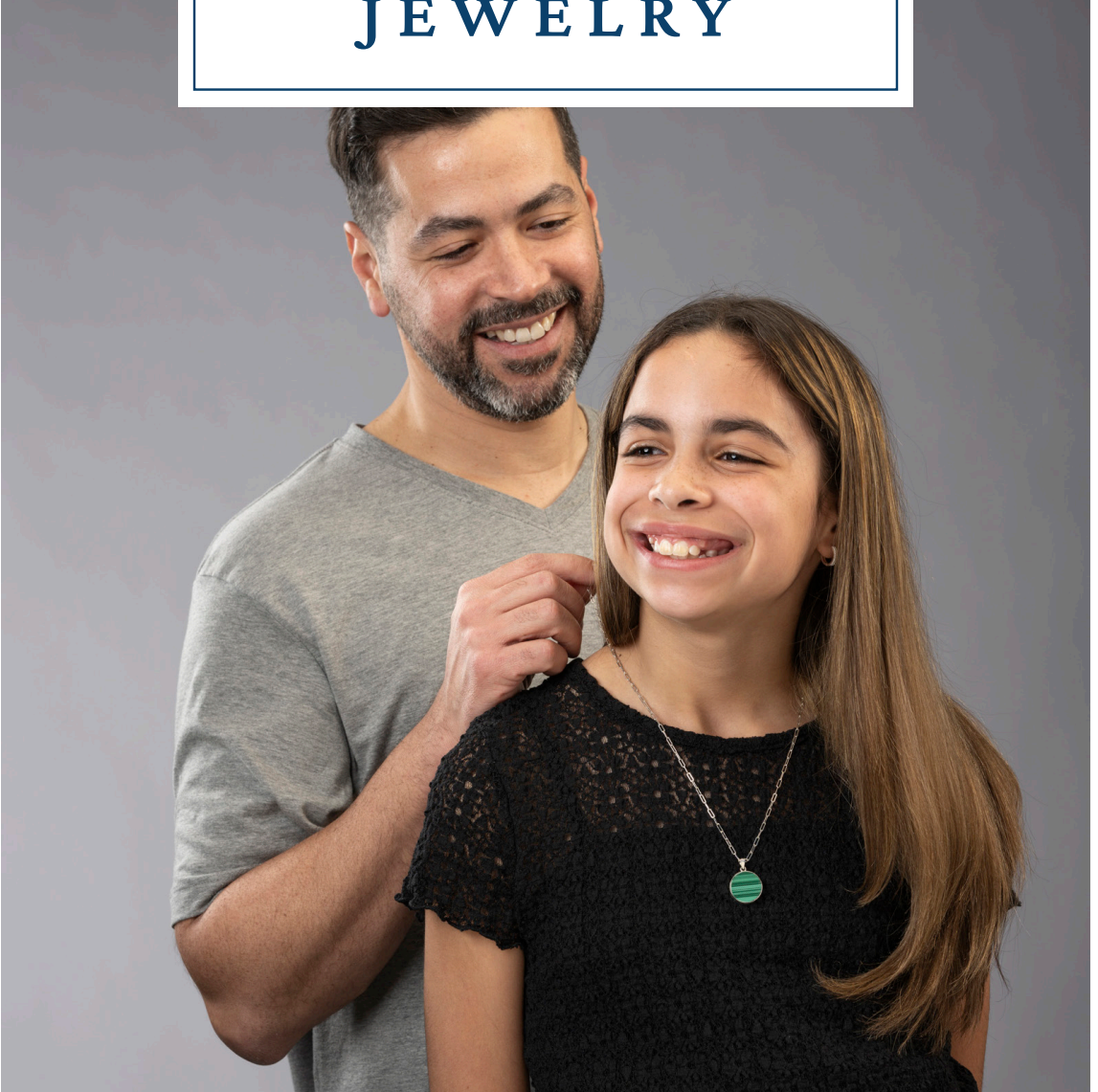


2024

REMEMBRANCE JEWELRY



We offer a variety of different metals and finishes in our Remembrance Jewelry lineup, designed to meet the budgetary needs of any family and their unique personal desires.



14K Solid Gold

Our 14K gold collection is comprised of high-quality solid gold construction. The size of these pieces is smaller, and more traditional in look and feel.



Sterling Silver

With many pieces in larger, bolder shapes, our sterling silver collection is constructed of .925 sterling silver with no additional plating to honor the beauty of the natural silver appearance.



18K Gold Vermeil

Constructed of sterling silver and coated with an 18K gold vermeil finish, this collection has a more vibrant yellow color than 14K gold. Due to the plated nature of vermeil, this collection gives the look of gold without the higher price tag.



Stainless Steel

Stainless steel offers attractive designs at a price point below those of precious metal construction. Available in men's and women's designs, all pieces are available in a natural stainless steel silver look, while some are available in a modern black finish style.

14K Gold Jewelry

Constructed of 14K gold, this collection features the high-quality construction and timeless look of gold. May be paired with 14K Gold Chain, **sold separately**.



**14K Gold
Heart Pendant***

210271

Measures .5" w x .75" h



**14K Gold
Teardrop Pendant***

210273

Measures .38" w x .88" h



**14K Gold
Cross Pendant***

210269

Measures .5" w x .88" h



**14K Gold
Feather Pendant***

284293

Measures .83" w x .25" h



20" 14K Gold Chain

210284



*Chain sold separately

If desired, you can arrange for your funeral professional to place cremated remains inside a pendant. Actual product may vary from photographic representation and based on manufacturer availability.

18K Gold Vermeil & Sterling Silver Pendants

A staple in jewelry, sterling silver offers the beauty of silver with an added strength while our 18K gold vermeil options add the bold look of gold with a durable gold vermeil plating on top of sterling silver.



18K Gold Vermeil Heart Pendant*

284290

Measures .5" w x .75" h



Sterling Silver Heart Pendant*

210283

Measures .5" w x .75" h



18K Gold Vermeil Teardrop Pendant*

284286

Measures .38" w x .88" h



Sterling Silver Teardrop Pendant*

210267

Measures .38" w x .88" h



18K Gold Vermeil Sideways Heart Pendant*

284311

Measures .6" w x .6" h



Sterling Silver Sideways Heart Pendant*

255748

Measures .6" w x .6" h



18K Gold Vermeil Sideways Cross Necklace

284289

Measures 1.1" w x .64" h
Includes sterling silver chain that adjusts to 18" or 20" length



Sterling Silver Sideways Cross Necklace

255747

Measures 1.1" w x .64" h
Includes sterling silver chain that adjusts to 18" or 20" length



18K Gold Vermeil Compass - Blue Pendant*

284285

Measures 1.03" w x 1.03" h



Sterling Silver Compass - Blue Pendant*

283746

Measures 1.03" w x 1.03" h



18K Gold Vermeil Cross Pendant*

284288

Measures .5" w x .88" h



Sterling Silver Cross Pendant*

210281

Measures .5" w x .88" h



18K Gold Vermeil Men's Cross Pendant*

284312

Measures .63" w x 1" h



Sterling Silver Men's Cross Pendant*

221618

Measures .63" w x 1" h



18K Gold Vermeil Starfish Pendant*

284291

Measures .95" w x 1" h



Sterling Silver Starfish Pendant*

255749

Measures .95" w x 1" h



**18K Gold Vermeil
Swoop Necklace**

284282

Measures 1.65" w x .53" h



**Sterling Silver
Swoop Necklace**

283744

Measures 1.65" w x .53" h



**18K Gold Vermeil
Lock Pendant***

284281

Measures .5" w x .74" h



**Sterling Silver
Lock Pendant***

283743

Measures .5" w x .74" h



**18K Gold Vermeil
Round Pendant***

284284

Measures 1.03" w x 1.03" h
Initials engraving included



**Sterling Silver
Round Pendant***

283741

Measures 1.03" w x 1.03" h
Initials engraving included



**18K Gold Vermeil
Sideways Feather
Necklace**

284283

Measures 1.43" w x .46" h



**Sterling Silver
Sideways Feather
Necklace**

283745

Measures 1.43" w x .46" h



**18K Gold Vermeil
Bar Pendant***

284280

Measures .24" w x 1.47" h
Initials engraving included



**Sterling Silver
Bar Pendant***

283742

Measures .24" w x 1.47" h
Initials engraving included



**18K Gold Vermeil
Key Necklace**

284313

Measures .75" w x 2.25" h
Includes silk cord 19" long



**Sterling Silver
Key Necklace**

248381

Measures .75" w x 2.25" h
Includes silk cord 19" long



The Sideways Cross, Sideways Feather and Swoop Necklace include the respective 18K Gold Vermeil or Sterling Silver chain. The 18K Gold Vermeil and Sterling Silver Key Necklace include a silk cord and cannot be paired with a different chain option.

Sterling Silver Gemstone Pendant

Featuring natural gemstones, each pendant will have a unique look or graining. These beautiful pieces can be paired with any of our sterling silver chains below. Engraving on back, initials only included.

Pendants measure .8" w x .8" h.



**Sterling Silver
Malachite
Pendant***
283824



**Sterling Silver
Mother of Pearl
Pendant***
283825



**Sterling Silver
Blue Lapis
Pendant***
283826



**Sterling Silver
Tiger's Eye
Pendant***
283827



**Sterling Silver
Onyx
Pendant***
283828

18K Gold Vermeil & Sterling Silver Chains

These chains may be paired with any sterling silver or 18K gold vermeil pendant that does not already include a chain. All chains are adjustable to 18" or 20" length.



Sterling Silver Chain
210280



**Sterling Silver
Men's Chain**
221619



**Sterling Silver
Paperclip Chain**
283733



**Sterling Silver
1.5 MM Bead Chain**
283843



18K Gold Vermeil Chain
284314



**18K Gold Vermeil
Men's Chain**
284279



**18K Gold Vermeil
Paperclip Chain**
284274



**18K Gold Vermeil
1.5 MM Bead Chain**
284277

Taking Care of Your Sterling Silver and 18K Gold Vermeil

As sterling silver and 18K gold vermeil is exposed to pollutants in the air, it becomes tarnished and loses its luster because of oxidation. By following a few basic guidelines, caring for sterling silver and 18K gold vermeil is simple – and will add to its beauty and value.

1. Before each wearing, polish your sterling silver and 18K gold vermeil with a polishing cloth. These cloths are treated with a special jeweler's rouge, which removes light tarnish and won't scratch your jewelry.
2. After each wearing, polish and store your sterling silver and 18K gold vermeil in an airtight compartment or plastic bag to minimize tarnishing.
3. Put your jewelry on last. Exposing jewelry to hair spray, cosmetics and perfume can cause spots. It also should be removed before swimming, showering, and dishwashing, or when handling bleaches, alcohols and cleansers.

If desired, you can arrange for your funeral professional to place cremated remains inside a pendant or bracelet. Actual product may vary from photographic representation and based on manufacturer availability.

New! Imitation Birthstone Gems 18K Gold Vermeil and Sterling Silver

This unique collection of imitation birthstones provides a way to personalize your remembrance jewelry to memorialize your loved one. These imitation birthstones can be added to any necklace independently or used in conjunction with other pendants. Birthstones measure .15" w x .15" h. Birthstone Gems do not hold cremated remains.



**Sterling Silver
January Gem***
283831



**18K Gold Vermeil
January Gem***
284299



**Sterling Silver
February Gem***
283832



**18K Gold Vermeil
February Gem***
284300



**Sterling Silver
March Gem***
283833



**18K Gold Vermeil
March Gem***
284301



**Sterling Silver
April Gem***
283834



**18K Gold Vermeil
April Gem***
284302



**Sterling Silver
May Gem***
283835



**18K Gold Vermeil
May Gem***
284303



**Sterling Silver
June Gem***
283836



**18K Gold Vermeil
June Gem***
284304



**Sterling Silver
July Gem***
283837



**18K Gold Vermeil
July Gem***
284305



**Sterling Silver
August Gem***
283838



**18K Gold Vermeil
August Gem***
284306



**Sterling Silver
September Gem***
283839



**18K Gold Vermeil
September Gem***
284307



**Sterling Silver
October Gem***
283840



**18K Gold Vermeil
October Gem***
284308



**Sterling Silver
November Gem***
283841



**18K Gold Vermeil
November Gem***
284309



**Sterling Silver
December Gem***
283842



**18K Gold Vermeil
December Gem***
284310

*Chain sold separately

Actual product may vary from photographic representation and based on manufacturer availability.

Stainless Steel Jewelry

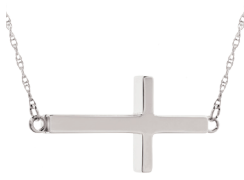
Constructed of stainless steel, these basic jewelry pieces reflect timeless designs & include a stainless steel chain that may be adjusted to 18" or 20" lengths.



Stainless Steel Sideways Heart

255745

Measures .75"w x .75"h



Stainless Steel Sideways Cross

255744

Measures 1.1"w x .64"h



Stainless Steel Starfish

255746

Measures .95"w x 1"h



Stainless Steel Dog Tags

Dog tags have been used for years as an identifier of an important life. This personal tribute celebrates someone near and dear to you. Engraving is available and included for both finishes. The Stainless Steel Dog Tag includes a 24" beaded chain in matching finish.



Stainless Steel Dog Tag Natural Finish

248594

Measures 1.13"w x 2"h



Stainless Steel Dog Tag Black Finish

283823

Measures 1.13"w x 2"h

Stainless Steel Montane Collection

The Montane Collection® features several unique items like cuff links a money clip, or a chain link bracelet allowing for a discreet personal memorial.



Cuff Links

243769

Measures .44"w x 1.06"h



Money Clip

243768

Measures .81" w x 2.13" h



Bracelet

243767

Measures 9.25" w x 1.38" h

Stainless Steel Cross Collection

Celebrate the spirituality of your loved one with this collection featuring a wire brush finish in natural stainless or black. 24" bead chain in matching finish included.



**Stainless Steel Cross
Natural Finish**

283819

Measures 1.02"w x 1.51"h



**Stainless Steel Cross
Black Finish**

283820

Measures 1.02"w x 1.51"ht



Stainless Steel Arrow Collection

With a hammered finish, the Arrow collection has a unique modern flair. 24" bead chain in matching finish included.



**Stainless Steel Arrow
Natural Finish**

283821

Measures .92"w x 1.45"h



**Stainless Steel Arrow
Black Finish**

283822

Measures .92"w x 1.45"h

If desired, you can arrange for your funeral professional to place cremated remains inside a pendant or bracelet. Actual product may vary from photographic representation and based on manufacturer availability.

Medallion Beads

Crafted in sterling silver, Batesville's unique bead collection features medallion insignias to highlight what was special about your loved one. These beads can be used as a pendant or on a bracelet. Engraving available with initials only included. Medallion beads measure .75"w x 1.25"h.



Mom
274138



Grandma
274140



Wife
248425



Sister
248423



Daughter
251471



Angel
248410



In God's Care
248413



Footprints
248415



Butterfly
248434



Dad
274137



Grandpa
274139



Husband
248424



Brother
248422



Son
251472



Eagle
248432



Friend
248433



Together Forever
248426

Antique finish and colors will vary in intensity and appearance.
Color of actual product may vary from photographic representation.

Medallion Chains/Bracelets

This necklace and bracelet pair with our medallion beads to create a meaningful keepsake.



20" Stainless Steel Necklace

248402



Sterling Silver Bracelet

248400 - 7.75" bracelet

248401 - 8.5" bracelet

Assembling Bead Selections

Follow these simple assembly instructions to select and arrange your unique keepsake. Now you can create a personal tribute to your loved one that you'll cherish for years to come.

1. Choose a bracelet or necklace. For correct bracelet length, measure your wrist and add an extra 1" to 1½" to allow for the width of the beads.
2. Slide your beads onto the chain.
3. A gripper bead is included with the purchase of each bracelet and can be used to keep the beads from sliding. These beads have a rubber gasket that fits snugly to the bracelet and can easily be moved where desired.
4. Arrange your beads any way you want. The variations are endless.





©2024 Batesville Services, LLC
9M/ArP/0824